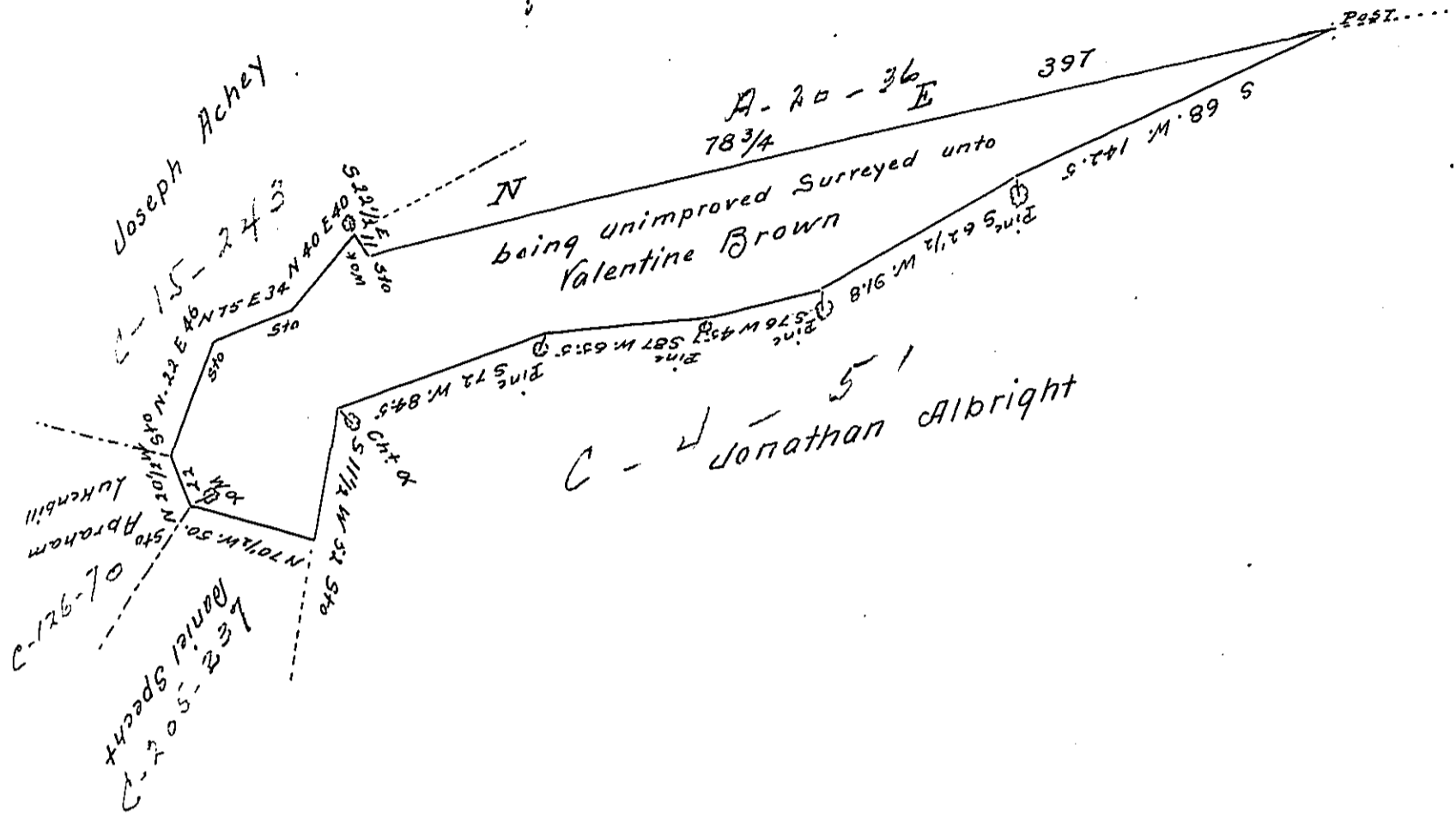


Thomas Kremer



Situate in Manheim Township in Schuylkill County Contain-
 ing 114 acres 141 perches and allowance of six per Cent for
 Roads &c Surveyed on the 28th day of February A.D. 1842
 by Virtue of a warrant dated the 13th day of January
 A.D. 1830. granted to Valentine Brown. by

Peter F. Ludwig D.S.

To Jacob Sallade Esqr.

Surveyor General of Pa.

IN TESTIMONY that the above is a copy of the original remaining on file in
 the Department of Internal Affairs of Pennsylvania, made
 conformably to an Act of Assembly approved the 16th day of
 February, 1833, I have hereunto set my Hand and caused
 the Seal of said Department to be affixed at Harrisburg,
 this first day of February 1904

Joseph B. Pearson
 Secretary of Internal Affairs.